

# RSRC1 Rabbit pAb

Catalog No.: A7210

## Basic Information

### Observed MW

38kDa

### Calculated MW

31kDa/38kDa

### Category

Primary antibody

### Applications

WB,IHC,IF/ICC

### Cross-Reactivity

Human, Mouse, Rat

## Background

This gene encodes a member of the serine and arginine rich-related protein family. The encoded protein is involved in both constitutive and alternative mRNA splicing. This gene may be associated with schizophrenia. A pseudogene of this gene is located on chromosome 9. Alternative splicing results in multiple transcript variants encoding different isoforms.

## Recommended Dilutions

|               |                |
|---------------|----------------|
| <b>WB</b>     | 1:500 - 1:2000 |
| <b>IHC</b>    | 1:50 - 1:100   |
| <b>IF/ICC</b> | 1:50 - 1:100   |

## Immunogen Information

|                |                   |
|----------------|-------------------|
| <b>Gene ID</b> | <b>Swiss Prot</b> |
| 51319          | Q96IZ7            |

### Immunogen

Recombinant fusion protein containing a sequence corresponding to amino acids 117-276 of human RSRC1 (NP\_001258763.1).

### Synonyms

RSRC1;BM-011;SFRS21;SRp53

## Contact

 | [www.abclonal.com](http://www.abclonal.com)

## Product Information

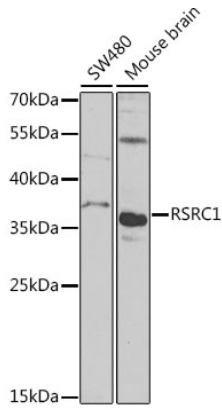
|               |                |                       |
|---------------|----------------|-----------------------|
| <b>Source</b> | <b>Isotype</b> | <b>Purification</b>   |
| Rabbit        | IgG            | Affinity purification |

### Storage

Store at -20°C. Avoid freeze / thaw cycles.

Buffer: PBS with 0.02% sodium azide,50% glycerol,pH7.3.

## Validation Data



Western blot analysis of extracts of various cell lines, using RSRC1 antibody (A7210) at 1:1000 dilution.

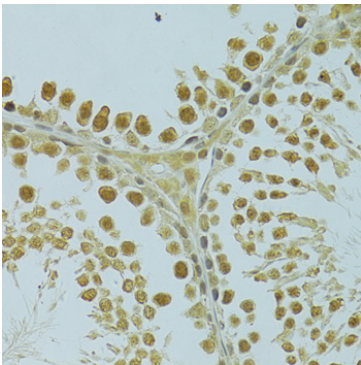
Secondary antibody: HRP Goat Anti-Rabbit IgG (H+L) (AS014) at 1:10000 dilution.

Lysates/proteins: 25ug per lane.

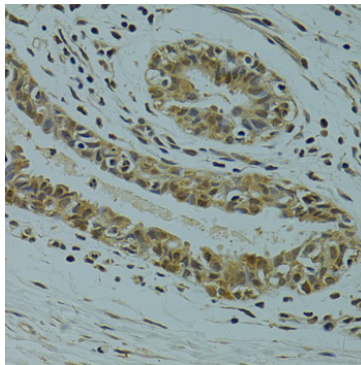
Blocking buffer: 3% nonfat dry milk in TBST.

Detection: ECL Basic Kit (RM00020).

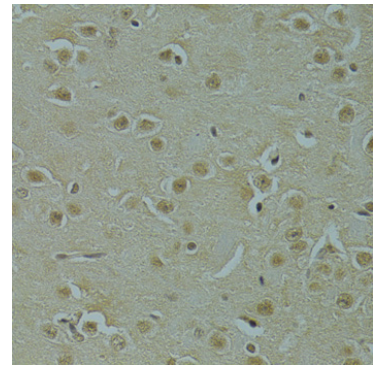
Exposure time: 90s.



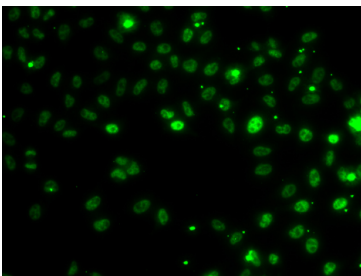
Immunohistochemistry of paraffin-embedded rat testis using RSRC1 antibody (A7210) at dilution of 1:100 (40x lens). Perform microwave antigen retrieval with 10 mM PBS buffer pH 7.2 before commencing with IHC staining protocol.



Immunohistochemistry of paraffin-embedded human breast cancer using RSRC1 antibody (A7210) at dilution of 1:100 (40x lens). Perform microwave antigen retrieval with 10 mM PBS buffer pH 7.2 before commencing with IHC staining protocol.



Immunohistochemistry of paraffin-embedded mouse brain using RSRC1 antibody (A7210) at dilution of 1:100 (40x lens). Perform microwave antigen retrieval with 10 mM PBS buffer pH 7.2 before commencing with IHC staining protocol.



Immunofluorescence analysis of MCF-7 cells using RSRC1 antibody (A7210).