

# CaMKI Rabbit mAb

Catalog No.: A3529 **Recombinant**

## Basic Information

---

### Observed MW

41kDa

### Calculated MW

41kDa

### Category

Primary antibody

### Applications

WB

### Cross-Reactivity

Human, Mouse, Rat

### CloneNo number

ARC2030

## Recommended Dilutions

---

**WB** 1:500 - 1:2000

## Background

---

Calcium/calmodulin-dependent protein kinase I is expressed in many tissues and is a component of a calmodulin-dependent protein kinase cascade. Calcium/calmodulin directly activates calcium/calmodulin-dependent protein kinase I by binding to the enzyme and indirectly promotes the phosphorylation and synergistic activation of the enzyme by calcium/calmodulin-dependent protein kinase I kinase. [provided by RefSeq, Jul 2008]

## Immunogen Information

---

### Gene ID

8536

### Swiss Prot

Q14012

### Immunogen

A synthetic peptide corresponding to a sequence within amino acids 1-100 of human CaMKI (Q14012).

### Synonyms

CAMKI

## Contact

---

 | [www.abclonal.com](http://www.abclonal.com)

## Product Information

---

### Source

Rabbit

### Isotype

IgG

### Purification

Affinity purification

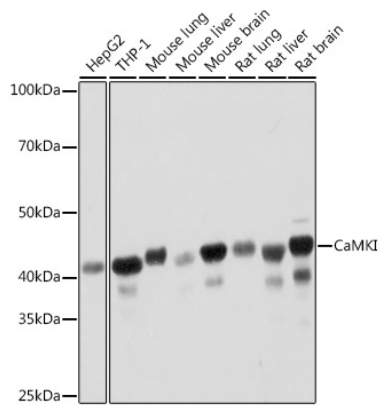
### Storage

Store at -20°C. Avoid freeze / thaw cycles.

Buffer: PBS with 0.05% proclin300,0.05% BSA,50% glycerol,pH7.3.

## Validation Data

---



Western blot analysis of extracts of various cell lines, using CaMKI Rabbit mAb (A3529) at 1:1000 dilution.

Secondary antibody: HRP Goat Anti-Rabbit IgG (H+L) (AS014) at 1:10000 dilution.

Lysates/proteins: 25ug per lane.

Blocking buffer: 3% nonfat dry milk in TBST.

Detection: ECL Basic Kit (RM00020).

Exposure time: 1min.