

BPIFB2 Rabbit pAb

Catalog No.: A16148

Basic Information

Observed MW

49kDa

Calculated MW

49kDa

Category

Primary antibody

Applications

WB

Cross-Reactivity

Mouse, Rat

Background

This gene encodes a member of the lipid transfer/lipopolysaccharide binding protein (LT/LBP) gene family. It is highly expressed in hypertrophic tonsils. This gene and three other members of the LT/LBP gene family form a cluster on the long arm of chromosome 20.

Recommended Dilutions

WB 1:500 - 1:2000

Immunogen Information

Gene ID

80341

Swiss Prot

Q8N4F0

Immunogen

Recombinant fusion protein containing a sequence corresponding to amino acids 40-340 of human BPIFB2 (NP_079503.1).

Synonyms

BPIFB2;BPIL1;C20orf184;LPLUNC2;RYSR;dj726C3.2

Contact

 | www.abclonal.com

Product Information

Source

Rabbit

Isotype

IgG

Purification

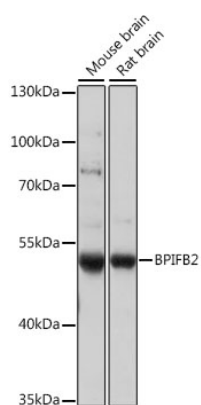
Affinity purification

Storage

Store at -20°C. Avoid freeze / thaw cycles.

Buffer: PBS with 0.01% thiomersal, 50% glycerol, pH7.3.

Validation Data



Western blot analysis of extracts of various cell lines, using BPIFB2 antibody (A16148) at 1:1000 dilution.

Secondary antibody: HRP Goat Anti-Rabbit IgG (H+L) (A5014) at 1:10000 dilution.

Lysates/proteins: 25ug per lane.

Blocking buffer: 3% nonfat dry milk in TBST.

Detection: ECL Basic Kit (RM00020).

Exposure time: 15s.