

ERLIN1 Rabbit pAb

Catalog No.: A14843

Basic Information

Observed MW

39kDa

Calculated MW

38kDa

Category

Primary antibody

Applications

WB,IHC,IP

Cross-Reactivity

Human, Mouse, Rat

Background

The protein encoded by this gene is part of a protein complex that mediates degradation of inositol 1,4,5-trisphosphate receptors in the endoplasmic reticulum. The encoded protein also binds cholesterol and regulates the SREBP signaling pathway, which promotes cellular cholesterol homeostasis. Defects in this gene have been associated with spastic paraplegia 62.

Recommended Dilutions

WB	1:500 - 1:2000
IHC	1:50 - 1:200
IP	1:50 - 1:200

Immunogen Information

Gene ID	Swiss Prot
10613	O75477

Immunogen

Recombinant fusion protein containing a sequence corresponding to amino acids 259-348 of human ERLIN1 (NP_006450.2).

Synonyms

ERLIN1;C10orf69;Erlin-1;KE04;KEO4;SPFH1;SPG62;erlin-1

Contact

 | www.abclonal.com

Product Information

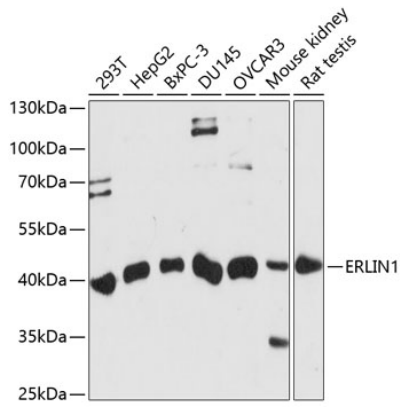
Source	Isotype	Purification
Rabbit	IgG	Affinity purification

Storage

Store at -20°C. Avoid freeze / thaw cycles.

Buffer: PBS with 0.01% thiomersal,50% glycerol,pH7.3.

Validation Data



Western blot analysis of extracts of various cell lines, using ERLIN1 antibody (A14843) at 1:1000 dilution.

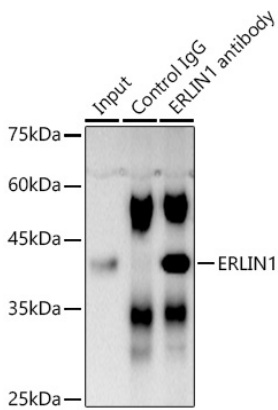
Secondary antibody: HRP Goat Anti-Rabbit IgG (H+L) (AS014) at 1:10000 dilution.

Lysates/proteins: 25ug per lane.

Blocking buffer: 3% nonfat dry milk in TBST.

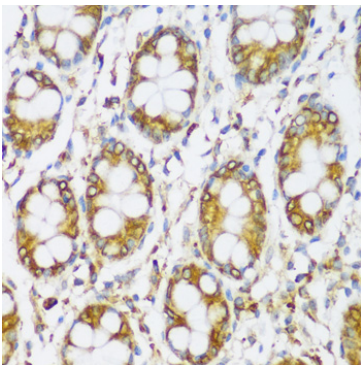
Detection: ECL Basic Kit (RM00020).

Exposure time: 90s.



Immunoprecipitation analysis of 300ug extracts of DU145 cells using 3ug ERLIN1 antibody (A14843).

Western blot was performed from the immunoprecipitate using ERLIN1 antibody (A14843) at a dilution of 1:1000.



Immunohistochemistry of paraffin-embedded human colon using ERLIN1 antibody (A14843) at dilution of 1:100 (40x lens). Perform microwave antigen retrieval with 10 mM PBS buffer pH 7.2 before commencing with IHC staining protocol.