

# MTUS1 Rabbit pAb

Catalog No.: A13437

## Basic Information

### Observed MW

141kDa

### Calculated MW

39kDa/48kDa/50kDa/58kDa/84kDa/135kDa/141kDa

### Category

Primary antibody

### Applications

WB

### Cross-Reactivity

Human

## Background

This gene encodes a protein which contains a C-terminal domain able to interact with the angiotension II (AT2) receptor and a large coiled-coil region allowing dimerization. Multiple alternatively spliced transcript variants encoding different isoforms have been found for this gene. One of the transcript variants has been shown to encode a mitochondrial protein that acts as a tumor suppressor and participates in AT2 signaling pathways. Other variants may encode nuclear or transmembrane proteins but it has not been determined whether they also participate in AT2 signaling pathways.

## Recommended Dilutions

WB 1:500 - 1:2000

## Immunogen Information

### Gene ID

57509

### Swiss Prot

Q9ULD2

### Immunogen

Recombinant fusion protein containing a sequence corresponding to amino acids 207-436 of human MTUS1 (NP\_065800.1).

### Synonyms

MTUS1;ATBP;ATIP;ATIP3;ICIS;MP44;MTSG1

## Contact

 | [www.abclonal.com](http://www.abclonal.com)

## Product Information

### Source

Rabbit

### Isotype

IgG

### Purification

Affinity purification

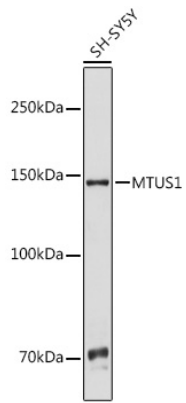
### Storage

Store at -20°C. Avoid freeze / thaw cycles.

Buffer: PBS with 0.02% sodium azide,50% glycerol,pH7.3.

## Validation Data

---



Western blot analysis of extracts of SH-SY5Y cells, using MTUS1 antibody (A13437) at 1:1000 dilution.  
Secondary antibody: HRP Goat Anti-Rabbit IgG (H+L) (AS014) at 1:10000 dilution.  
Lysates/proteins: 25ug per lane.  
Blocking buffer: 3% nonfat dry milk in TBST.  
Detection: ECL Basic Kit (RM00020).  
Exposure time: 3s.